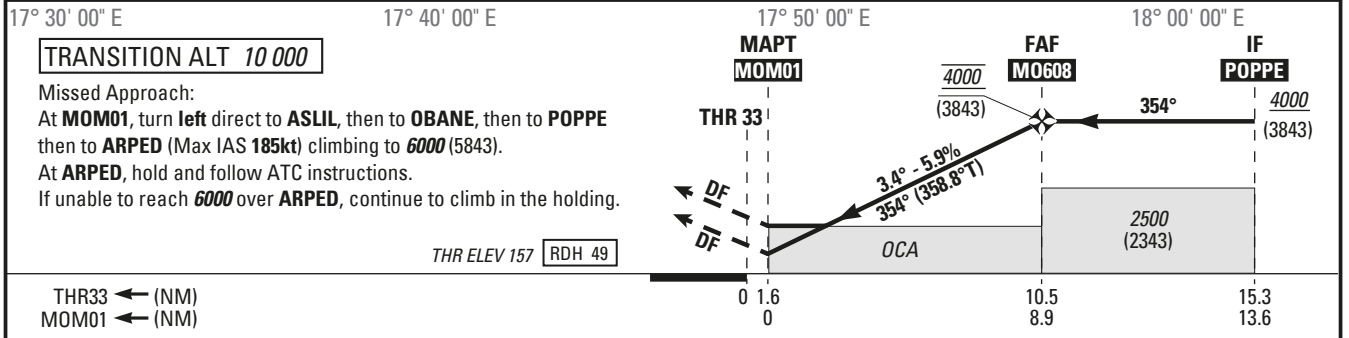
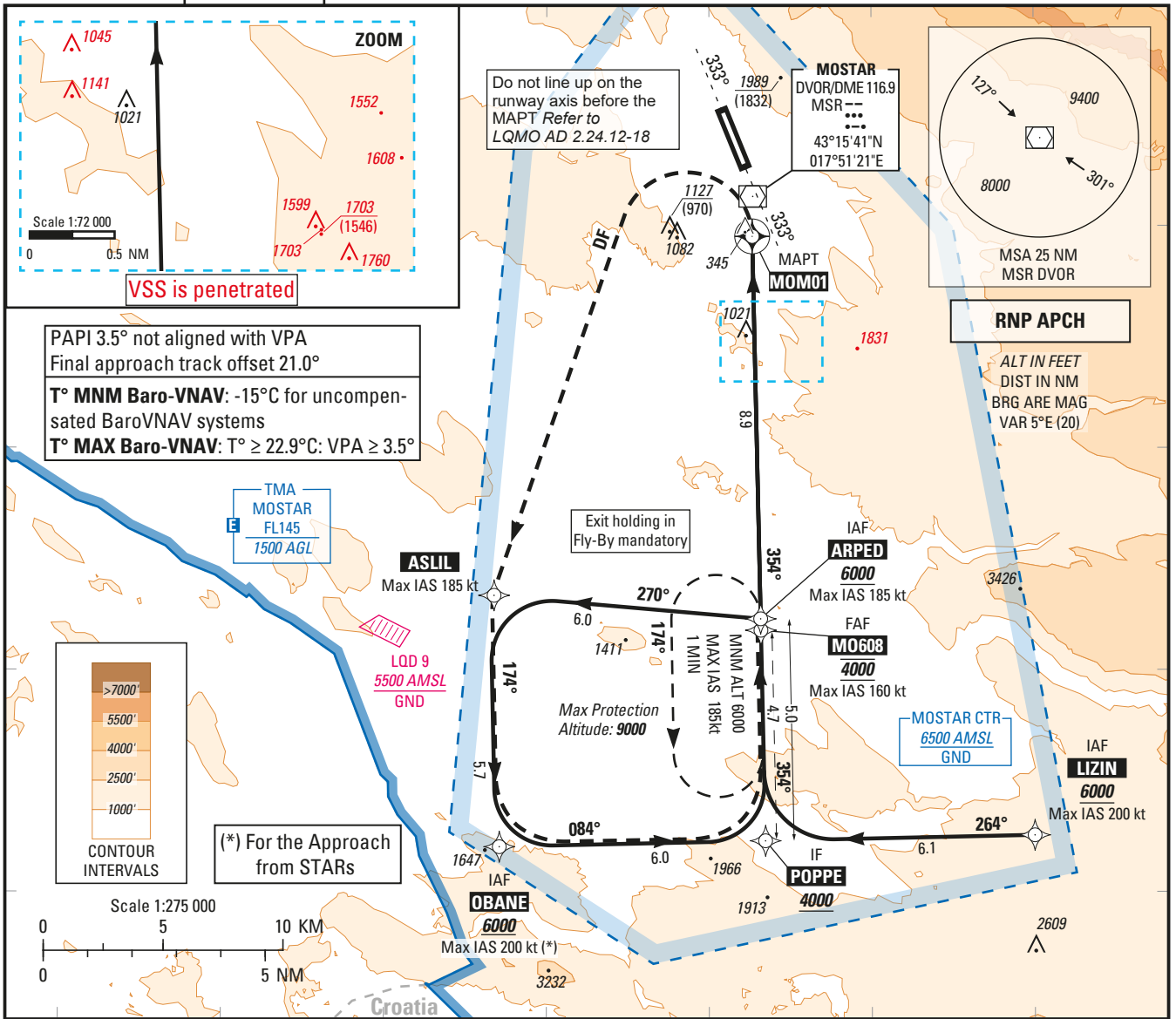


INSTRUMENT APPROACH CHART— ICAO CAT A B C	SBAS CH 44103 E33A	AERODROME ELEV 174 HEIGHTS RELATED TO THR RWY 33 - ELEV 157	TWR 125.550 APP 120.225 129.875 ATIS 126.225	MOSTAR / MOSTAR (LQMO) RNP RWY 33
--	---------------------------	--	---	--



MNM AD: Vertical distances in feet REF HGT: THR ELEV

	LPV MA 2.5%	LPV MA 4.0%	LNAV/VNAV	LNAV	Circling(1)
CAT	OCA (H)	OCA (H)	OCA (H)	OCA (H)	OCA (H)
A					2290 (2130)
B			1710 (1550)	1710 (1550)	2290 (2130)
C					2390 (2230)

(1) Day time only and not authorized East side of the runway 15/33

DIST MOM01		3	4	5	6	7	8
NM	ALT	1880	2240	2600	2960	3320	3690
	(HGT)	(1723)	(2083)	(2443)	(2803)	(3163)	(3523)

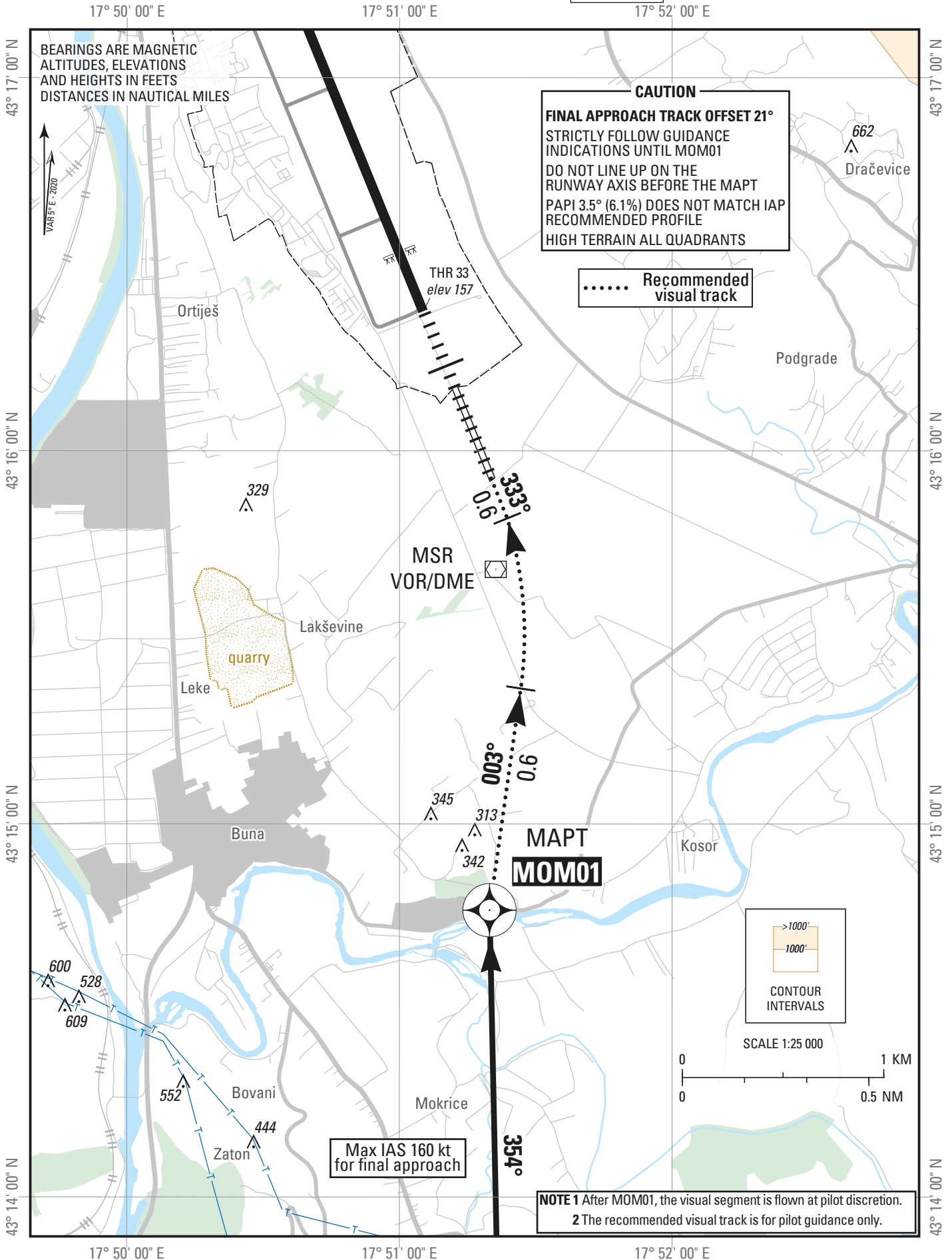
FAF - MAPT (NM)	8.9	Speed Time	70 Kt	85 Kt	100 Kt	115 Kt	130 Kt	145 Kt	160 Kt
			7 min 36	6 min 16	5 min 19	4 min 38	4 min 06	3 min 40	3 min 20
Slope (%)	5.94	VSP (ft/min)	420	510	600	690	780	870	960

**VISUAL LANDING
CHART
CAT A B C**

AD ELEV 174 ft
HEIGHTS RELATED TO
THR RWY 33 - **ELEV 157** ft

TWR 125.550
APP 120.225
129.875
ATIS 126.225

**MOSTAR / MOSTAR (LQMO)
VISUAL LANDING A RWY 33**



LQMO RNP RWY33																				
Proposed tabular description for navigation database coding - RNP APPROACH																				
Seq N°	PT	W/P ID	OverFly	Fix role	TD	CRS Val (°)	CRS Type	TIME val	TIME uom	DIST val NM	ALT DESC	ALT ONE FT	ALT TWO FT	SPD LMT KT	VRT ANG (°)	NAV PERF	Phase	Transition Identifier	Runway Direction	Magnetic CRS val(°)
10	IF	OBANE		IAF							+	6000		-200		1.000 NM	A	OBANE		
20	TF	POPPE				088.680	TT			6.000	+	4000				1.000 NM	A	OBANE		083.680
10	IF	LIZIN		IAF							+	6000		-200		1.000 NM	A	LIZIN		
20	TF	POPPE				268.866	TT			6.069	+	4000				1.000 NM	A	LIZIN		263.866
10	IF	ARPED		IAF							+	6000		-185		1.000 NM	A	MO33F		
20	TF	ASLIL				275.078	TT			6.027						1.000 NM	A	MO33F		270.078
30	TF	OBANE				178.771	TT			5.662	+	6000				1.000 NM	A	MO33F		173.771
40	TF	POPPE				088.680	TT			6.000	+	4000				1.000 NM	A	MO33F		083.680
10	IF	POPPE		IF							+	4000				1.000 NM	R		33	
20	TF	MO608		FAF		358.772	TT			4.743	@	4000		-160		1.000 NM	R		33	353.772
30	TF	MOM01	Y	MAPT		358.771	TT			8.872	@	797			-3.400	0.300 NM	R		33	353.771
10	DF	ASLIL			L											1.000 NM	Z	MO33F		
20	TF	OBANE				178.771	TT			5.662						1.000 NM	Z	MO33F		173.771
30	TF	POPPE				088.680	TT			6.000						1.000 NM	Z	MO33F		083.680
40	TF	ARPED	Y			358.772	TT			5.000	+	6000		-185		1.000 NM	Z	MO33F		353.772
50	HM	ARPED	Y		L	359.000	TT	60.000	S		B	9000	6000	-185		NA	Z	MO33F		354.000

Waypoint coordinates		
W/P ID	W/P Type	WGS-84 Latitude Longitude
ARPED	ICAO	43°06'09.2700"N 017°51'34.9900"E
ASLIL	ICAO	43°06'40.9900"N 017°43'23.2200"E
LIZIN	ICAO	43°01'16.7700"N 018°00'00.1000"E
MOM01	ADHP	43°14'46.1200"N 017°51'19.8300"E
MO608	ADHP	43°05'53.8230"N 017°51'35.4470"E
OBANE	ICAO	43°01'01.2600"N 017°43'33.1500"E
POPPE	ICAO	43°01'09.2600"N 017°51'43.7700"E

Input data

Operation Type	0
SBAS Provider	1 (EGNOS)
Airport Identifier	LQMO
Runway	33
Runway Letter	0 (None)
Approach Performance Designator	0
Route Indicator	
Reference Path Data Selector	0
Reference Path Identifier	E33A
LTP/FTP Latitude	431624.4630N
LTP/FTP Longitude	0175116.9310E
LTP/FTP Ellipsoidal Height (meters)	89.8
FPAP Latitude	431741.8380N
Delta FPAP Latitude (seconds)	77.3750
FPAP Longitude	0175114.6530E
Delta FPAP Longitude (seconds)	-2.2780
Threshold Crossing Height	15.0
TCH Units Selector	1 (meters)
Glidepath Angle (degrees)	3.40
Course Width (metres)	105.00
Length Offset (metres)	0
HAL (metres)	40.0
VAL (metres)	35.0

Output data

Data Block	10	0F	0D	11	0C	21	00	00	01	33
	33	05	1E	2A	92	12	86	93	A9	07
	82	17	7E	5C	02	34	EE	FF	2C	81
	54	01	64	00	C8	AF	5B	56	CF	C2
Calculated CRC Value	5B56FC2									

Required Additional Data

ICAO Code	LQ
LTP/FTP Orthometric Height (metres)	47.7

EUROCONTROL FAS DB tool Version 3.2.1